

D6K

Track-Type Tractor



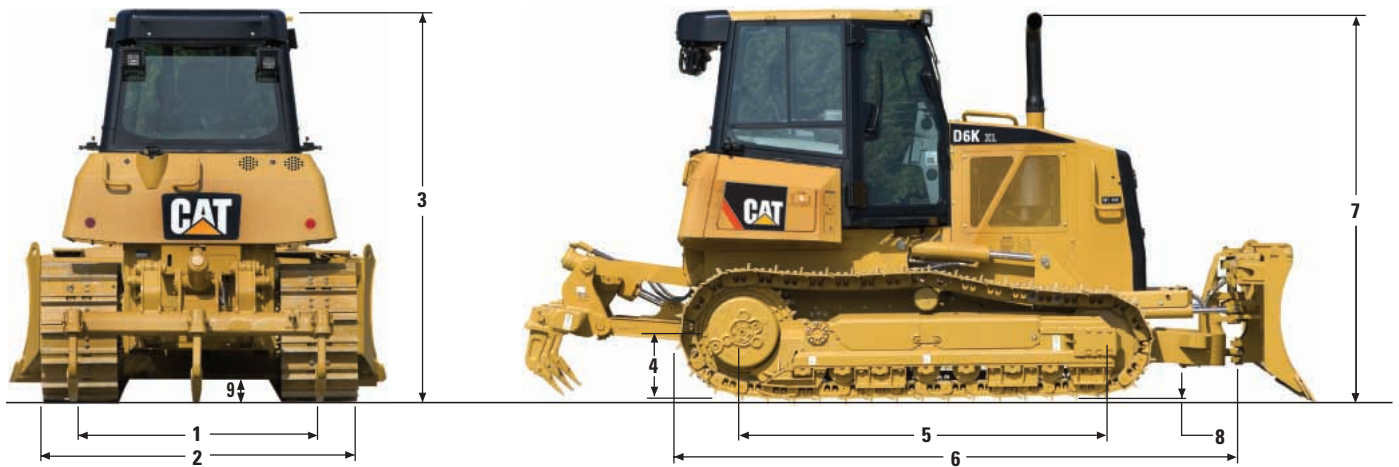
Engine

Engine Model	Cat [®] C6.6 ACERT™	
Flywheel Power	93.2 kW	125 hp

Weights

Operating Weight – XL	12 886 kg	28,409 lb
Operating Weight – LGP	13 467 kg	29,690 lb

Dimensions (approximate)



Tractor Dimensions

	XL		LGP	
1 Track gauge	1770 mm	70 in	2000 mm	79 in
2 Width of tractor	With the following attachments:			
Standard shoes without blade	2330 mm	92 in	2760 mm	109 in
Standard shoes with VPAT blade angled 25°	2817 mm	111 in	3118 mm	123 in
Standard shoes with foldable blade in transport position	2336 mm	92 in	2760 mm	109 in
3 Machine height from tip of grouser:	With the following equipment:			
ROPS canopy	2958 mm	116 in	2958 mm	116 in
ROPS cab	2958 mm	116 in	2958 mm	116 in
4 Drawbar height (center of clevis)	From ground face of shoes			
	483 mm	19 in	483 mm	19 in
5 Length of track on ground	2645 mm	104 in	2645 mm	104 in
6 Length of basic tractor (with C-Frame)	4220 mm	166 in	4220 mm	166 in
	With the following attachments, add to basic tractor length:			
	With the following attachments, add to basic tractor length:			
Drawbar	320 mm	13 in	320 mm	13 in
Ripper	1133 mm	45 in	1133 mm	45 in
PA50 winch	640 mm	25 in	640 mm	25 in
VPAT blades, straight	468 mm	18 in	468 mm	18 in
VPAT blade, angled 25°	1116 mm	44 in	1179 mm	46 in
7 Height over stack from tip of grouser	2914 mm	115 in	2914 mm	115 in
8 Height of grouser	48 mm	2 in	48 mm	2 in
9 Ground clearance from ground face of shoe (per SAE J1234)	360 mm	14 in	360 mm	14 in