

302.5C

Mini Hydraulic Excavator



Engine

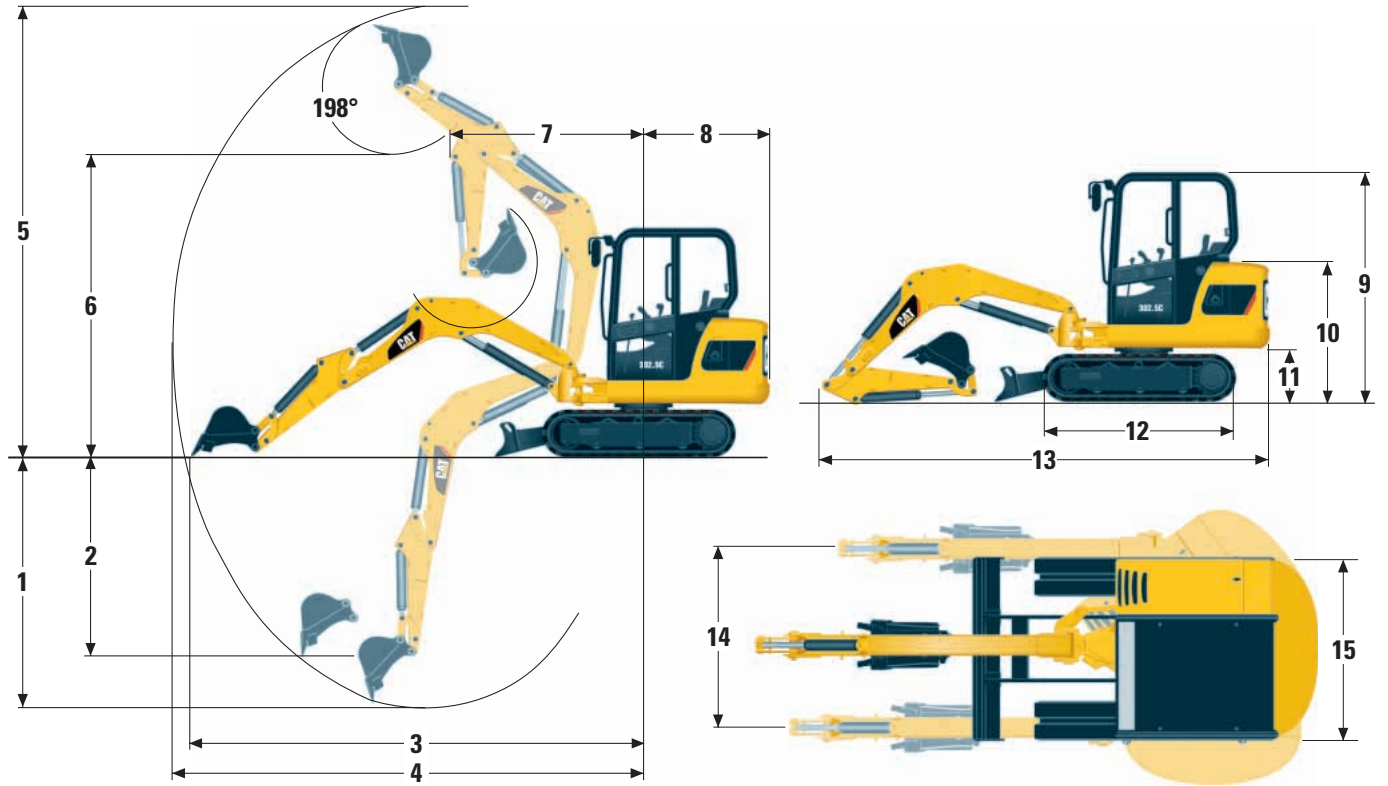
Rated net power (ISO 9249)	18.6 kW	24.9 hp
-------------------------------	---------	---------

Weights

Operating weight with canopy	2745 kg	6,052 lb
Operating weight with cab	2850 kg	6,283 lb

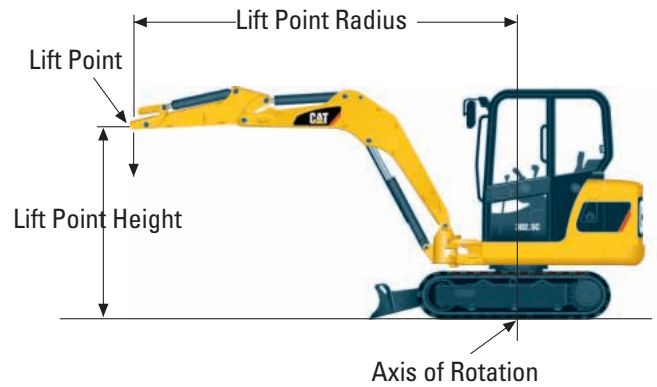
- Weight with rubber tracks, bucket, operator, full fuel and auxiliary lines.
- Weight varies depending on machine configuration.

Dimensions and Lift Capacities



	Standard Stick		Long Stick	
1	2640 mm	8'8"	2930 mm	9'7"
2	1920 mm	6'3"	2180 mm	7'2"
3	4545 mm	14'11"	4810 mm	15'9"
4	4670 mm	15'4"	4930 mm	16'2"
5	4355 mm	14'3"	4530 mm	14'10"
6	3110 mm	10'2"	3280 mm	10'9"
7	1875 mm	6'2"	1890 mm	6'2"
8	1280 mm	4'2"	1280 mm	4'2"
9	2300 mm	7'6"	2300 mm	7'6"
10	1405 mm	4'7"	1405 mm	4'7"
11	545 mm	1'9"	545 mm	1'9"
12	1925 mm	6'4"	1925 mm	6'4"
13	4515 mm	14'10"	4515 mm	14'10"
14	1110 mm	3'8"	1110 mm	3'8"
15	1450 mm	4'9"	1450 mm	4'9"

Track and blade width	1450 mm	4'9"
Gauge width	1150 mm	3'9"
Shoe width	300 mm	1'



With tracks level on the ground.

Lift Capacities at Ground Level	Over Front		Over Side		Over Front		Over Side	
	Lift point radius	2500 mm	8'2"	2500 mm	8'2"	3500 mm	11'6"	3500 mm
Blade down	1285 kg*	2,833 lb*	1090 kg	2,403 lb	816 kg*	1,799 lb*	671 kg	1,479 lb
Blade up	791 kg	1,744 lb	635 kg	1,400 lb	499 kg	1,100 lb	413 kg	911 lb

* Limited by hydraulic capacity rather than tipping load.

The above loads are in compliance with SAE hydraulic excavator lift capacity rating standard SAE J1097 and do not exceed 87% of hydraulic lifting capacity or 75% of tipping capacity.

Excavator bucket weight is not included on this chart. Lifting capacities are for standard stick.